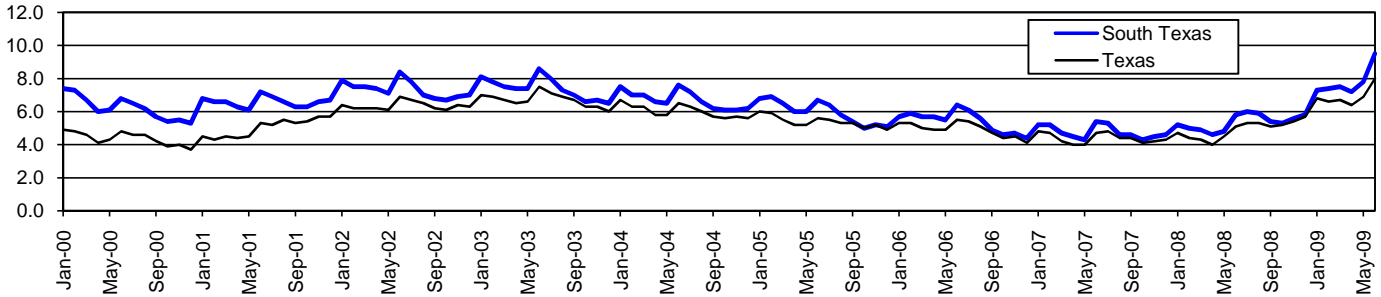


# South Texas Workforce Development Area

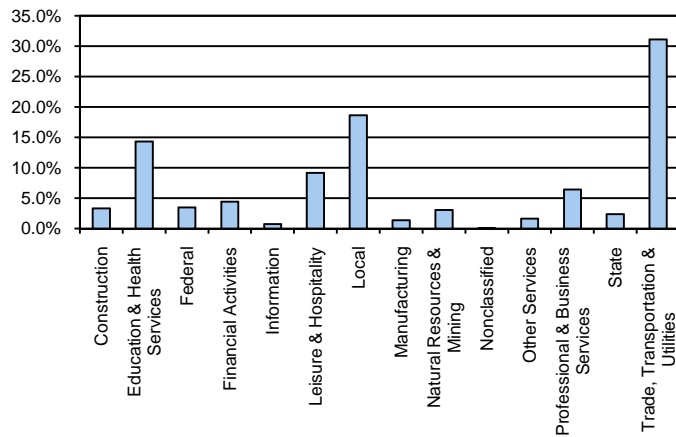
June 2009

South Texas WDA					Texas				
	CLF	Employed	Unemployed	Rate		CLF	Employed	Unemployed	Rate
<b>Jun-09</b>	105,310	95,317	9,993	9.5	<b>Jun-09</b>	12,075,183	11,110,167	965,016	8.0
<b>May-09</b>	103,885	95,745	8,140	7.8	<b>May-09</b>	11,919,952	11,098,215	821,737	6.9
<b>Jun-08</b>	101,053	95,144	5,909	5.8	<b>Jun-08</b>	11,762,592	11,162,244	600,348	5.1

## Historical Unemployment Rates



## South Texas WDA Industry Composition 4th Quarter 2008



## Total WDA Claims

	Jun-09	May-09	Jun-08	OTY
<b>Initial</b>	1,078	1,282	595	<b>483</b>
<b>Continued</b>	9,024	7,448	3,303	<b>5,721</b>
<b>Continued Claims for the Week of the 12th</b>				
<b>Continued</b>	2,960	2,634	948	<b>2,012</b>

## Texas Unemployment Insurance Claims Filed

	Jun-09	May-09	Jun-08	OTY
<b>Initial</b>	120,940	115,591	69,157	<b>51,783</b>
<b>Continued</b>	1,389,112	1,320,400	518,348	<b>870,764</b>
<b>Continued Claims for the Week of the 12th</b>				
<b>Continued</b>	297,829	292,144	110,729	<b>187,100</b>

## South Texas WDA Average Weekly Wage

	South Texas	Qtr Change	Texas
<b>4th Quarter 2008</b>	\$611.63	43.71	\$934.10
<b>3rd Quarter 2008</b>	\$567.92	<b>OTY Change</b>	\$848.97
<b>4th Quarter 2007</b>	\$598.14	13.49	\$911.41

## NAICS Covered Employment Quarterly Data 4th Quarter 2008

SUPER SECTOR	Employment	Change	
		Quarter	Year
Construction	3,120	-85	-83
Education & Health Services	13,535	396	194
Federal	3,308	110	543
Financial Activities	4,190	-66	-1,294
Information	674	-26	-24
Leisure & Hospitality	8,675	6	303
Local	17,610	675	345
Manufacturing	1,270	-82	-205
Natural Resources & Mining	2,885	37	289
Nonclassified	52	0	-35
Other Services	1,553	-34	-27
Professional & Business Services	6,056	246	250
State	2,235	290	77
Trade, Transportation & Utilities	29,440	19	-315
<b>TOTAL</b>	<b>94,603</b>	<b>1,486</b>	<b>18</b>

## Size Class Employment Composition 4th Quarter 2008

